

Relação do aço

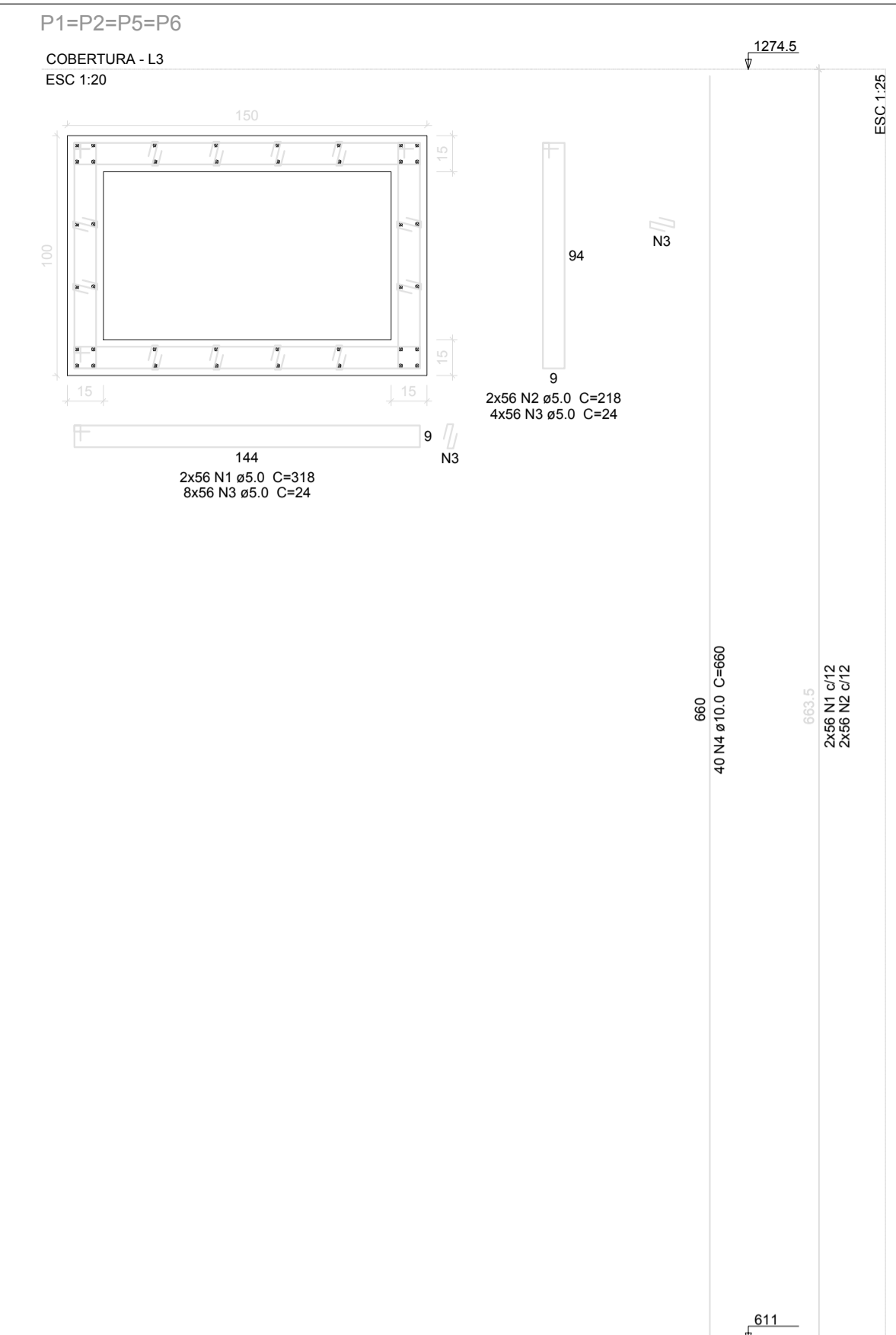
AÇO	N	DIAM (mm)	QUANT	C.UNIT (cm)	C.TOTAL (cm)
CA60	1	5.0	408	318	129744
CA50	2	5.0	408	218	88944
	3	5.0	2448	24	58752
	4	5.0	104	245	40180
	5	10.0	100	649	103940
	6	12.5	68	608	41344

Resumo do aço

AÇO	DIAM (mm)	C.TOTAL (m)	PESO + 10% (kg)
CA50	10.0	1038.4	704.2
CA60	12.5	413.5	438.1
	5.0	3178.2	538.5
PESO TOTAL (kg)			
CA50		1142.3	
CA60		538.5	

Volume de concreto (C-25) = 28.72 m³
Área de forma = 184.39 m²

PILARES BALDRAMES-BASE DO ARCO



Relação do aço

AÇO	N	DIAM (mm)	QUANT	C.UNIT (cm)	C.TOTAL (cm)
CA60	1	5.0	448	318	142464
CA50	2	5.0	448	218	97664
	3	5.0	2388	24	64512
	4	10.0	160	660	105600

Resumo do aço

AÇO	DIAM (mm)	C.TOTAL (m)	PESO + 10% (kg)
CA50	10.0	1056	716.2
CA60	5.0	3046.4	516.5
PESO TOTAL (kg)			
CA50		716.2	
CA60		516.5	

Volume de concreto (C-25) = 17.52 m³
Área de forma = 132.7 m²

PILARES BASE DO ARCO-COBERTURA

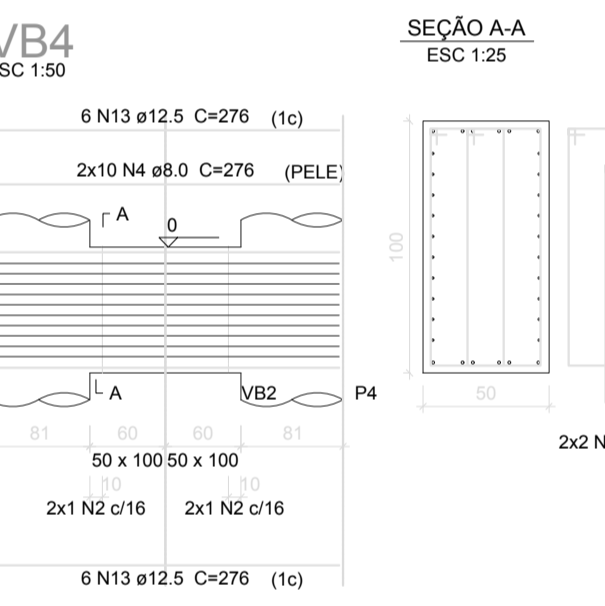
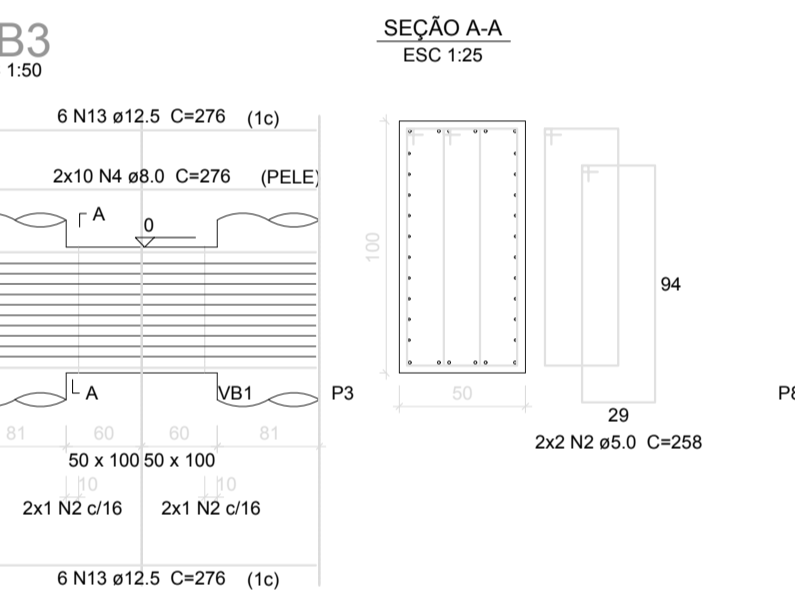
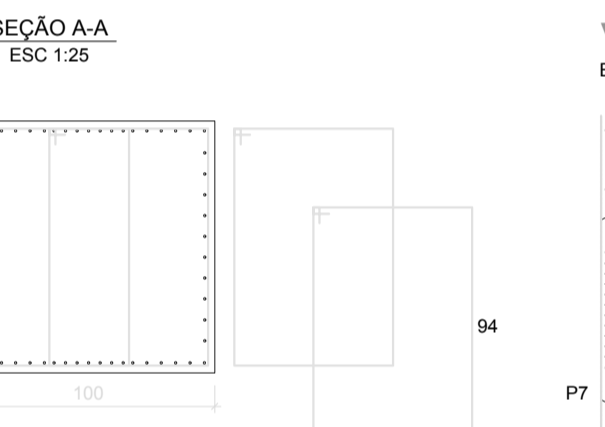
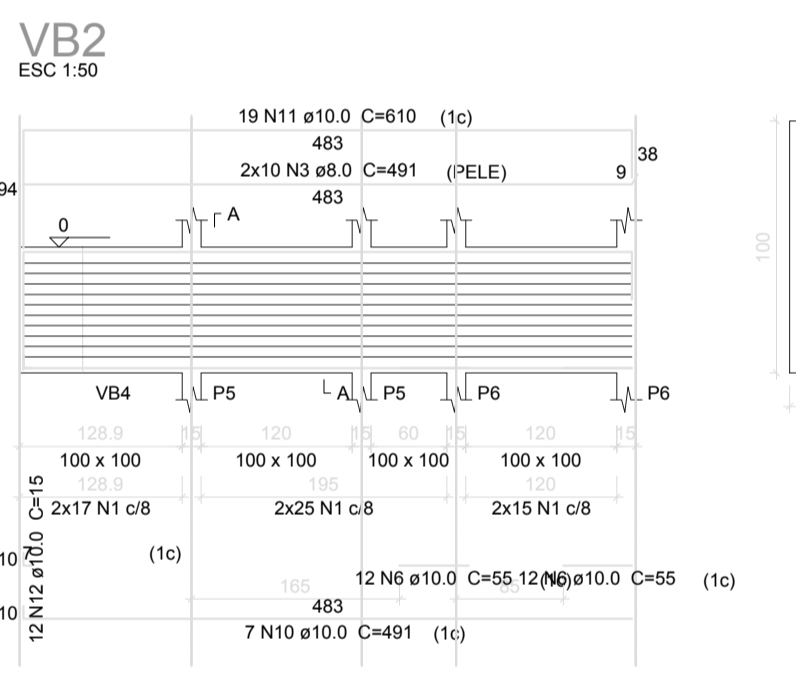
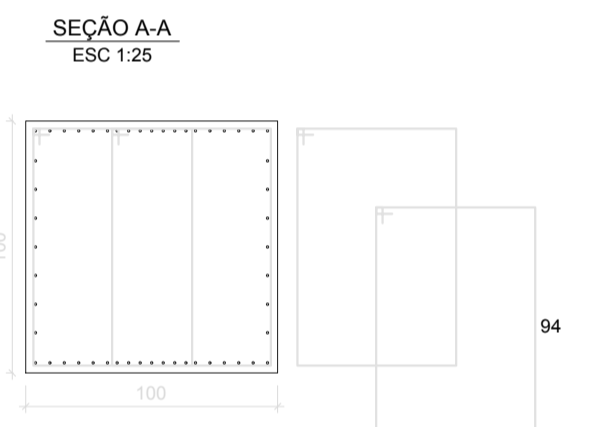
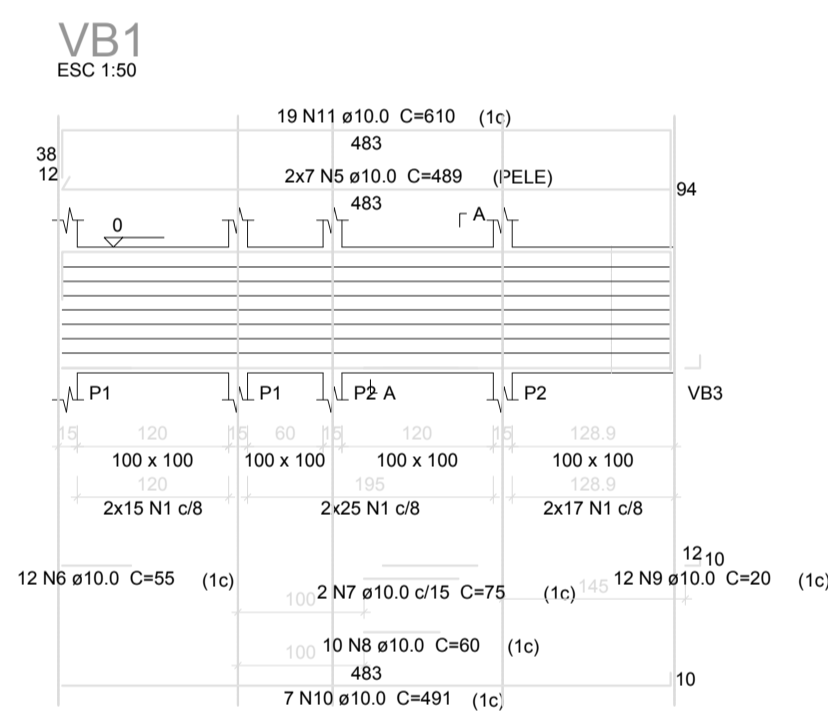
Relação do aço

AÇO	N	DIAM (mm)	QUANT	C.UNIT (cm)	C.TOTAL (cm)
CA60	1	5.0	228	326	74328
CA50	2	5.0	8	258	2064
	3	8.0	20	491	9820
	4	8.0	40	276	11040
	5	10.0	14	489	6846
	6	10.0	36	55	1980
	7	10.0	2	75	150
	8	10.0	10	60	600
	9	10.0	12	20	240
	10	10.0	14	491	6974
	11	10.0	38	610	23180
	12	10.0	12	15	180
	13	12.5	24	276	6624

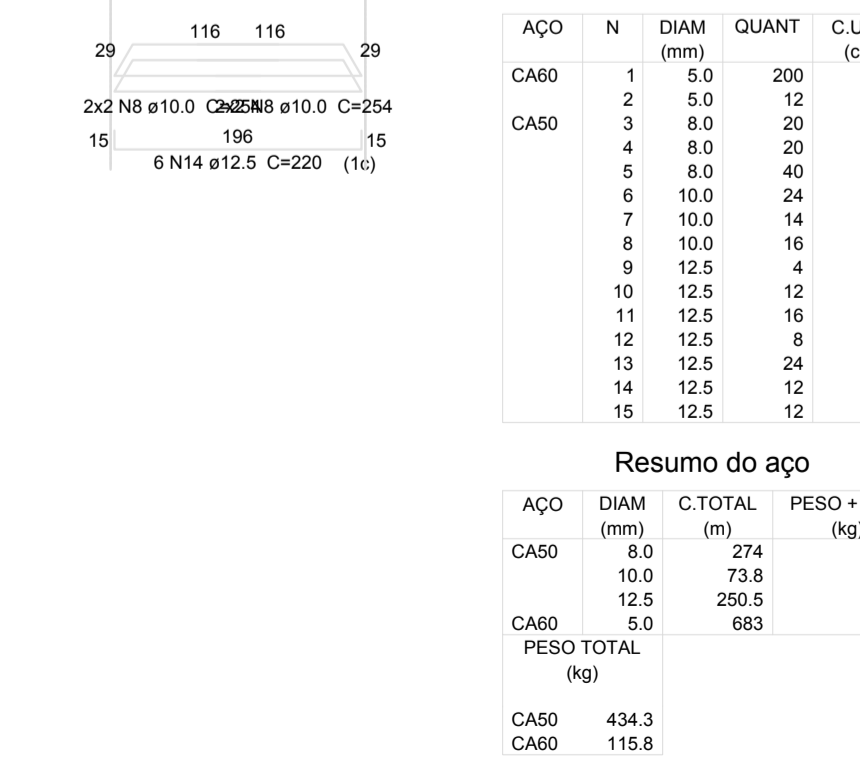
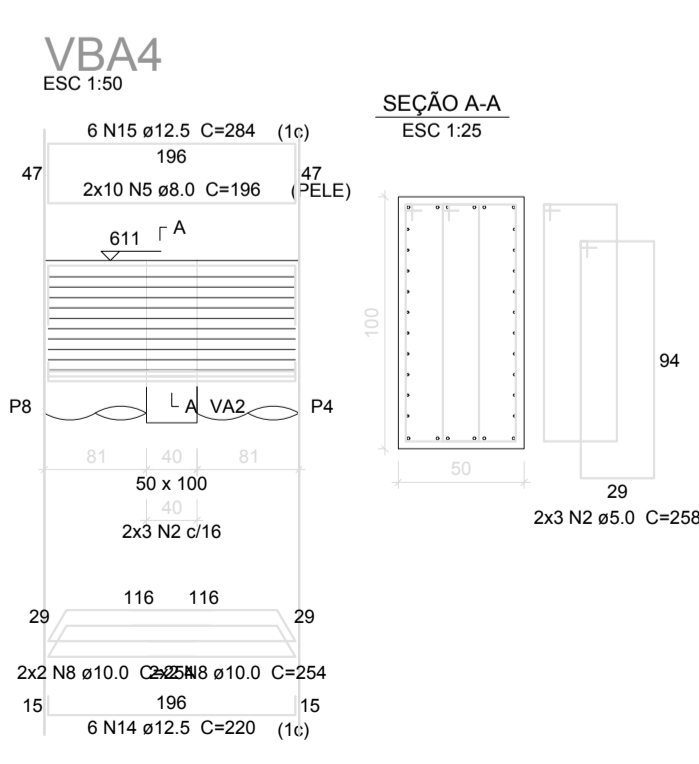
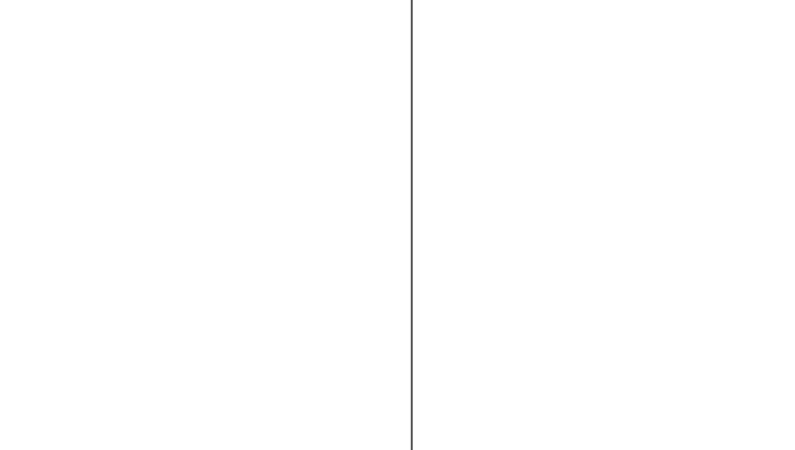
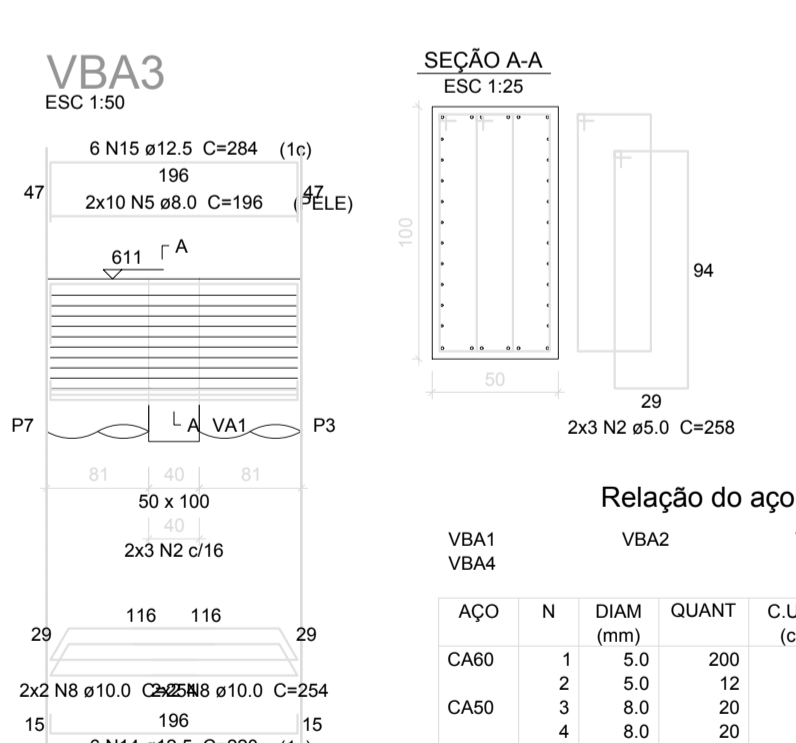
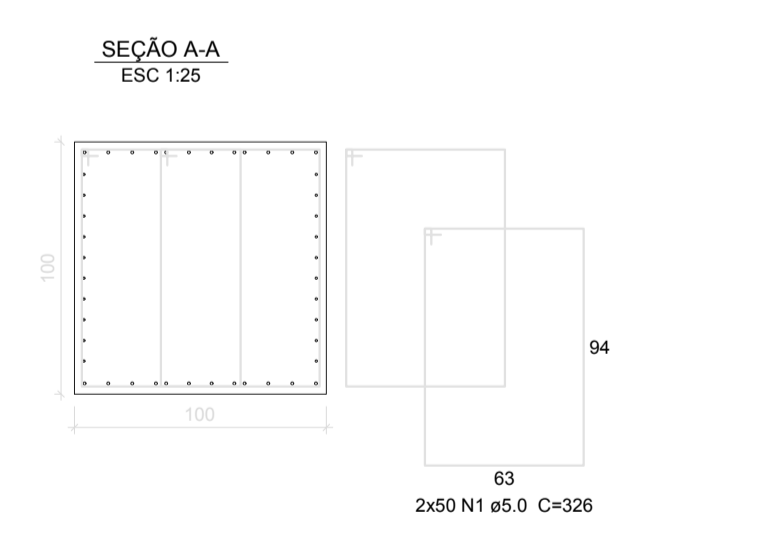
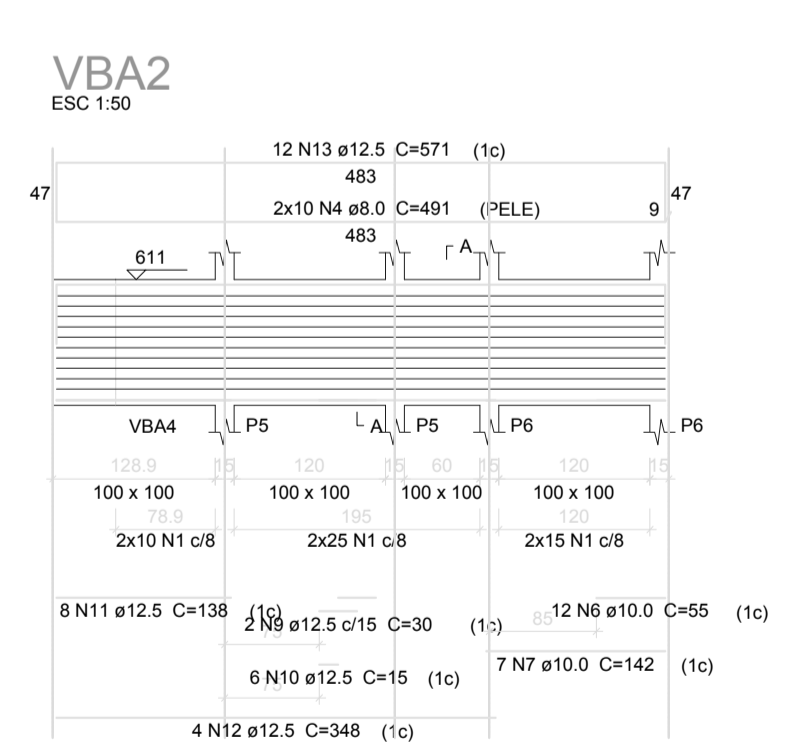
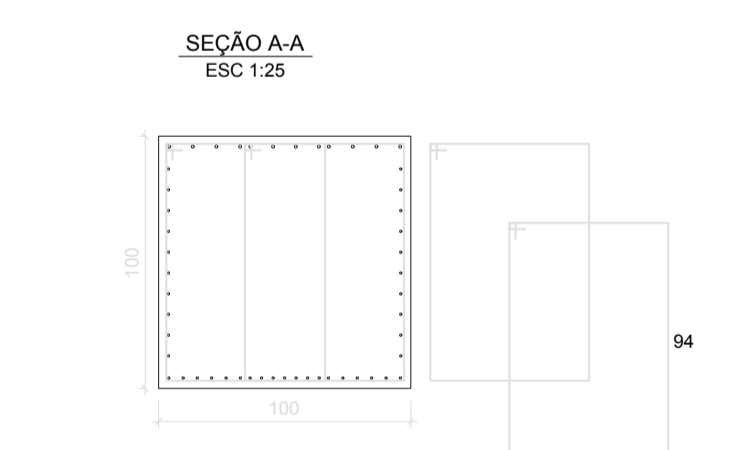
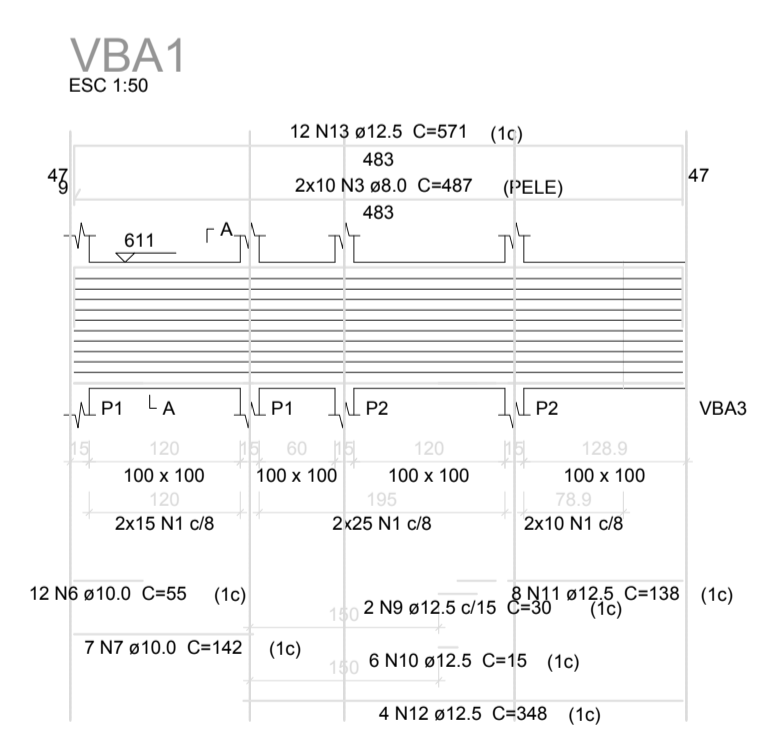
Resumo do aço

AÇO	DIAM (mm)	C.TOTAL (m)	PESO + 10% (kg)
CA50	8.0	208.6	90.5
	10.0	400.5	271.6
	12.5	66.3	70.2
CA60	5.0	764	129.5
PESO TOTAL (kg)			
CA50		432.3	
CA60		129.5	

Volume de concreto (C-25) = 12.6 m³
Área de forma = 43.44 m²



VIGAS BALDRAMES



VIGAS BASE DO ARCO

Relação do aço

AÇO	N	DIAM (mm)	QUANT	C.UNIT (cm)	C.TOTAL (cm)
CA60	1	5.0	200	326	65200
CA50	2	5.0	12	258	3096
	3	8.0	20	491	9740
	4	8.0	20	491	9820
	5	8.0	40	196	7840
	6	10.0	24	55	1320
	7	10.0	14	142	1988
	8	10.0	16	254	4064
	9	12.5	4	30	120
	10	12.5	12	15	180
	11	12.5	16	138	2208
	12	12.5	8	348	2784
	13	12.5	24	571	13704
	14	12.5	12	220	2640
	15	12.5	12	284	3408

Resumo do aço

AÇO	DIAM (mm)	C.TOTAL (m)	PESO + 10% (kg)
CA50	8.0	274	118.9
	10.0	73.8	50
	12.5	250.6	265.4
CA60	5.0	683	115.8
PESO TOTAL (kg)			
CA50		434.3	
CA60		115.8	

Volume de concreto (C-25) = 11.8 m³
Área de forma = 39.44 m²

PREFEITURA	CREA
ESTRUTURAL	
03/04	
OBRA: INSTITUCIONAL	
PROPRIETÁRIO: PREFEITURA MUNICIPAL DE PORTO NACIONAL	
END.: TO-050, PORTO NACIONAL- TO	
AREAS	
ver arquitetura	Proprietario Ass. PREFEITURA MUNICIPAL DE PORTO NACIONAL
	Autor do Proj. Ass.
	Proj. CREA 8880/D-GO
	ART Name ENG° CIVIL CLEIDSON DIAS DE SOUSA
	Resp. Ass.
	Tecnico
	CREA
	ART Name
	Firma Ass.
	Resp.
Des.:	CREA Name
Escala:	Indicada DATA: Maio/2017 Conferido: Revisão 02 Cadastro:
Conteúdo:	
PILARES, VIGAS BALDRAMES, VIGAS BASE DO ARCO	